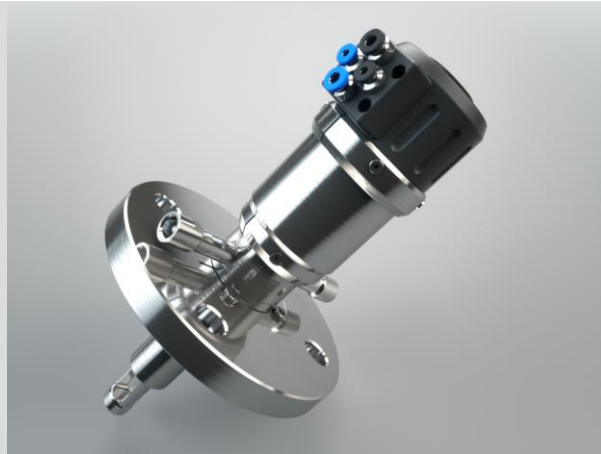


EXtract 810 stainless steel



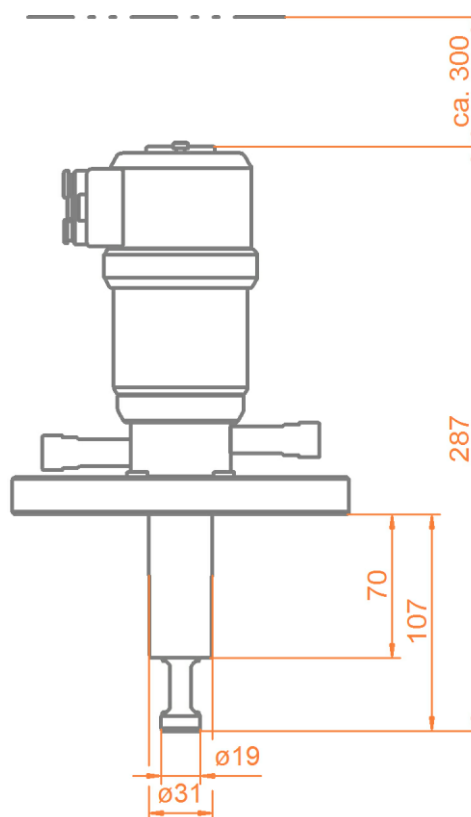
- » Robust design, integrated scraper
- » Extension of sensor-lifetime and reducing of maintenance efforts
- » Automatic safety lock while sensor is removed
- » Plug and play installation, colour- and size-coded connection system
- » Integrated limit switches Usable
- » in ATEX-areas Immersion
- » length up to 107mm

EXtract 810 is a pneumatically operated retractable probe housing made of stainless steel or Alloy C22 for installation of Ø12-225mm sensors on tanks or pipelines for fully automated sensor treatment.

Specifications

| | |
|---------------------|---|
| Process pressure | 0...16bar |
| Process temperature | -10...140°C |
| Ambient temperature | -10...70°C |
| Immersion length | up to 107mm |
| Sensors | Ø12-225mm PG 13.5 |
| Materials | stainless steel 1.4404 /316L, Alloy C22 (2.4602) |
| Sealings | EPDM, FPM(Viton), FFKM (Kalrez) |
| Process connection | Flange DN32, DN40, DN50, ANSI 1 ¼", ANSI 1 ½", ANSI 2", MNPT 1 ¼", TriClamp 1.5", TriClamp 2" |
| Cleaning ports | G1/8", G1/4", FNPT 1/4" |
| Operating power | compressed air 4...6 bar |
| Limit switches | pneumatic, integrated |

Dimensions



EXtract 810 stainless steel



Protecting cage in process position



Connection board EXtract



Installation on EXtract 820 with flow vessel EXflow720

Ordercode

| Code | Material (wetted parts) | Delivery |
|------|-------------------------------|----------|
| 4404 | Stainless steel 1.4404 / 316L | 2 weeks |
| HC22 | Alloy C22 2.4602 | 4 weeks |

| Code | Sealing material (wetted sealings) | Delivery |
|------|------------------------------------|----------|
| EPD | EPDM/FDA/USP VI | 2 weeks |
| FPM | FPM (Viton) | 2 weeks |
| FKM | FFKM (Kalrez) | 3 weeks |

| Code | Sensor type | Delivery |
|------|-----------------------------|----------|
| 225 | 225mm PG 13,5 gel-filled | 2 weeks |
| 280 | 280mm PG 13,5 liquid filled | 2 weeks |

| Code | Process connection | Delivery |
|------|------------------------------|----------|
| D32 | Flange DN32PN16 | 2 weeks |
| D40 | Flange DN40PN16 | 2 weeks |
| D50 | Flange DN50PN16 | 2 weeks |
| A14 | Flange ANSI 1 1/4" 150lbs | 2 weeks |
| A12 | Flange ANSI 1 1/2" 150lbs | 2 weeks |
| A20 | Flange ANSI 2" 150lbs | 2 weeks |
| N14 | NPT M 1 1/4" | 2 weeks |
| T15 | TriClamp 1-1,5" (OD Ø50.5mm) | 2 weeks |
| T20 | TriClamp 2.0 (OD Ø64mm) | 2 weeks |

| Code | Cleaning connection | Delivery |
|------|------------------------|----------|
| G18 | G 1/8" female thread | 2 weeks |
| G14 | G 1/4" female thread | 2 weeks |
| N14 | 1/4" NPT female thread | 2 weeks |

| Code | Position switch | Delivery |
|------|-----------------|----------|
| PN | pneumatic | 2 weeks |